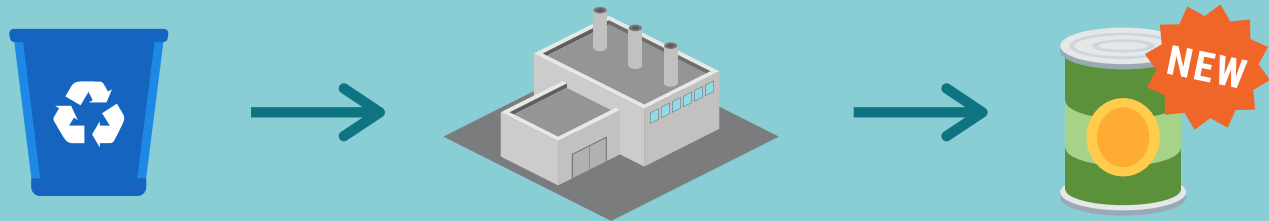




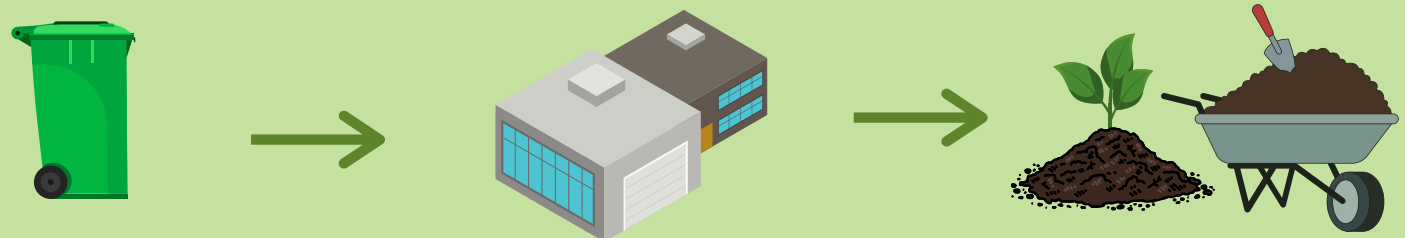
# How does Durham Region currently manage waste?

## Blue Box



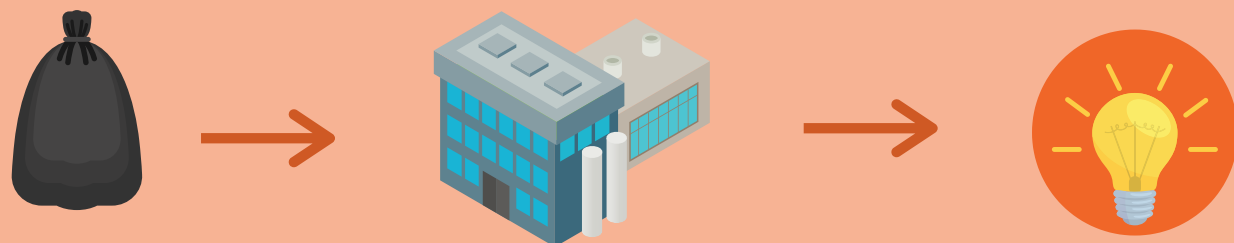
Recyclables are sent to our Material Recovery Facility (MRF) in Whitby for sorting and marketing. Where there is market demand, recyclable materials are then turned into new items.

## Green Bin



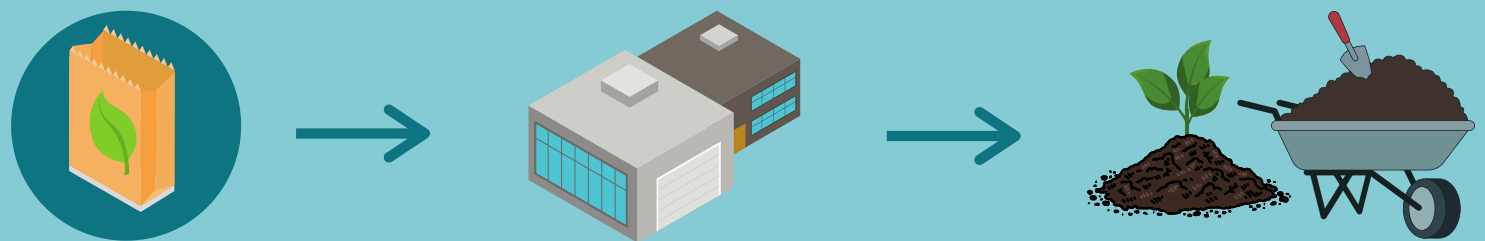
Organics are sent for composting at a private facility in Pickering and marketed to farmers, landscapers and soil remediation firms. Residents can also pick up compost for free at special community waste events.

## Garbage



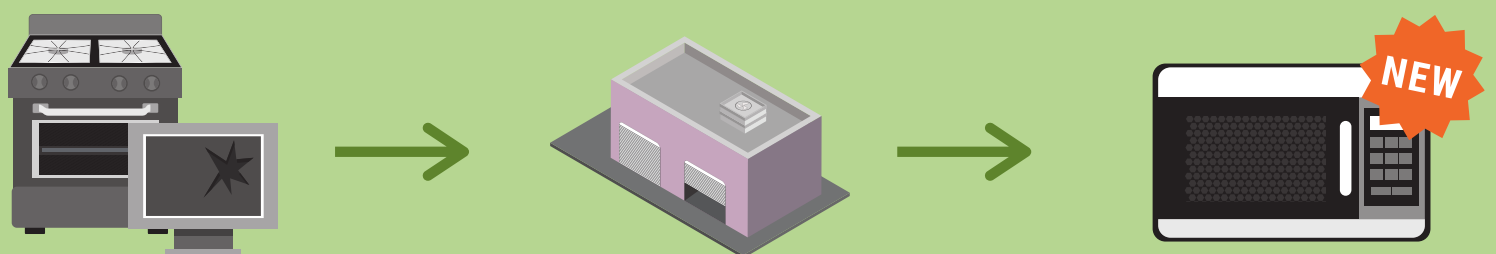
Garbage is sent to the Durham York Energy Centre (DYEC) in Courtice for incineration to generate electricity and recover metal for recycling.

## Leaf and Yard Waste



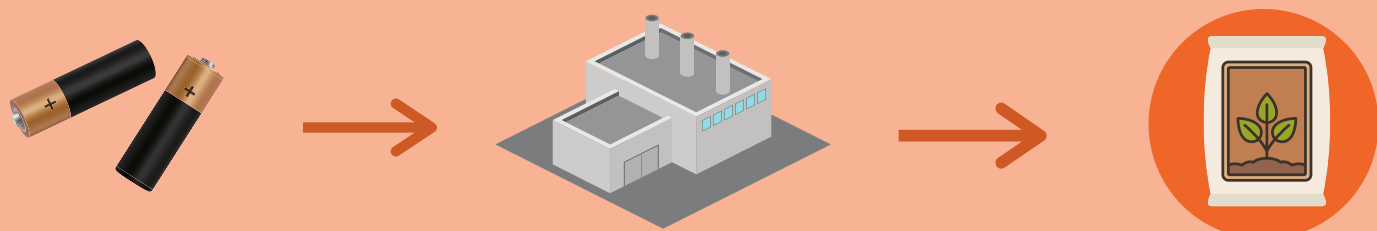
Leaf and yard waste is sent for composting at a private facility in Clarington and marketed to farmers, landscapers and soil remediation firms. Residents can also pick up compost for free at special community waste events.

## Electronics



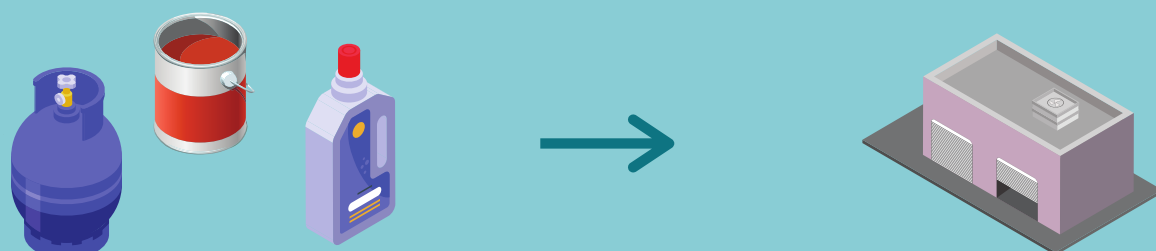
Electronics are sent to a Waste Management Facility for bulking and recycling. Scrap and precious metals are then reused for new items.

## Batteries



Batteries are collected and sent to a third party to be recycled. Metals are recycled and nutrients are used to create fertilizer.

## Household Hazardous Waste



Household hazardous waste products are dropped off at Waste Management Facilities or collected during annual waste events and disposed of properly.