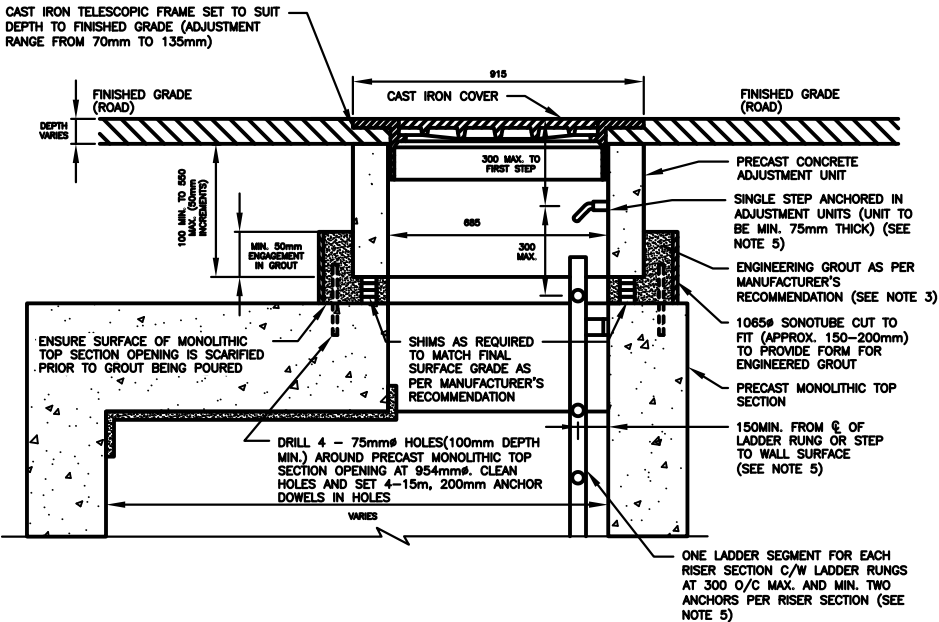


**NOTES:**  
1. THIS FRAME AND COVER SYSTEM FOR USE WITHIN PAVED PORTION OF ROW.

**PRECAST TAPERED TOP SECTION TO SUIT IFC CONCRETE ADJUSTMENT UNIT**

**NOTE:** THE INTEGRATED SYSTEM MUST BE GROUDED IN POSITION TO MATCH ROAD GRADE ANGLE. FINAL HEIGHT ADJUSTMENT MADE WITH TELESCOPIC FRAME SET.



**PRECAST FLAT CAP OPTION (MONOLITHIC TOP SECTION) WITH TRANSITION COLLAR TO SUIT IFC CONCRETE ADJUSTMENT UNIT**

**NOTES:**

1. TOP OF BENCHING SHALL BE SLOPED AT 2% TO CHANNEL.
2. ANY PIPES ENTERING THE PRECAST SECTION OF MAINTENANCE HOLE ABOVE POURED BASE MUST NOT ENTER AT A MAINTENANCE HOLE SECTION JOINT.
3. GROUT REQUIREMENTS: NON-SHRINK, MINIMUM 50 MPa AT 28 DAYS, TO BE INSTALLED ONLY AS PER MANUFACTURER'S APPLICATION GUIDELINES.
4. LIFTING HOLES IN PRECAST SECTIONS SHALL BE COMPLETELY FILLED WITH 3 PARTS SAND, 1 PART CEMENT MORTAR AND POINTED BEFORE BACKFILLING.
5. MAINTENANCE HOLE STEPS SHALL BE POSITIONED AS PER OPSD 405.010 OR OPSD 405.020 / MAINTENANCE HOLE LADDERS SHALL BE POSITIONED AS PER OPSD 406.010.
6. PRECAST FLAT TOP SHALL BE USED WHEN TOTAL HEIGHT OF PRECAST SECTION IS LESS THAN 1.80m.
7. GASKETS / WATERPROOF MEMBRANES SHALL BE PLACED AS PER MANUFACTURERS SPECIFICATIONS.
8. FOR MAINTENANCE HOLE DEPTHS GREATER THAN 5.0m, A MAINTENANCE HOLE SAFETY GRATING IS REQUIRED.
9. FOR DEPTHS GREATER THAN 7.5m, THE MAINTENANCE HOLE MUST BE INDIVIDUALLY DESIGNED IF NECESSARY.
10. BENCHING DETAIL AS PER OPSD 701.021.

ALL DIMENSIONS IN MILLIMETRES EXCEPT WHERE NOTED.



WORKS DEPARTMENT

**INTEGRATED FRAME AND COVER SYSTEM FOR MAINTENANCE HOLES IN PAVEMENT**

DWG. DATE: 2023 03  
REVISION NO.: 1  
REV. DATE: 2023 03  
SCALE: N.T.S.

S-100.071