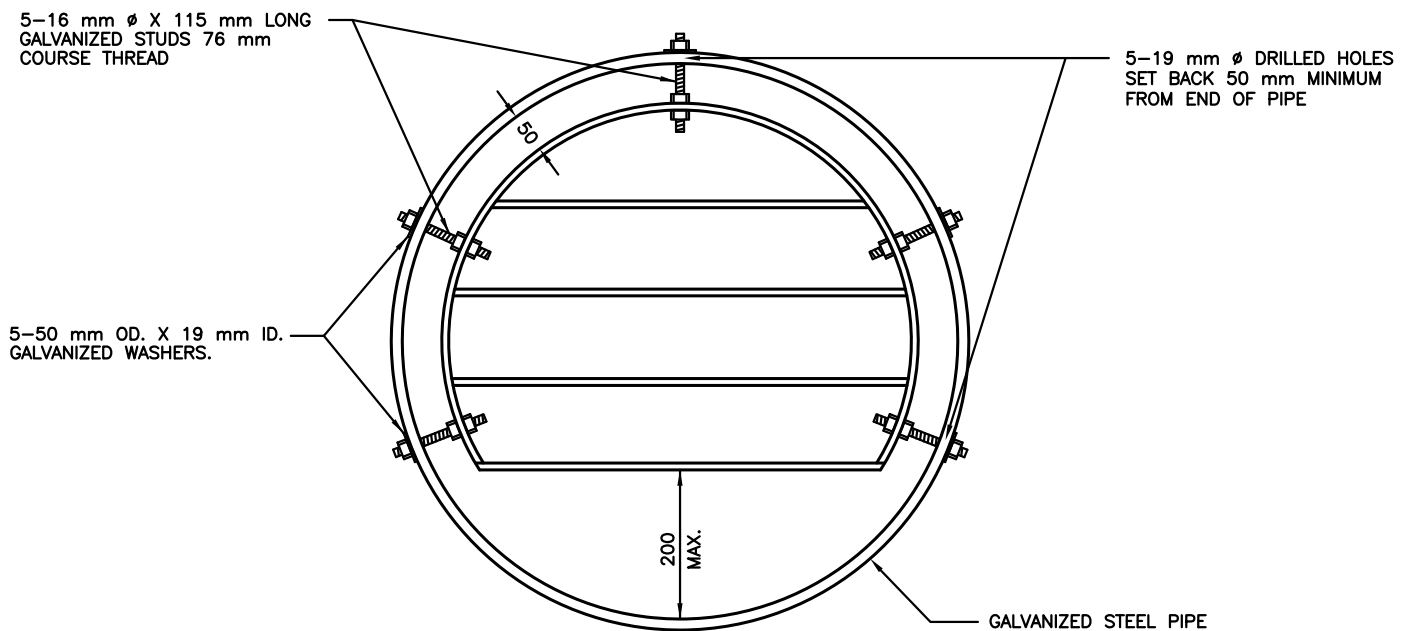


FABRICATION DETAIL



ASSEMBLY DETAIL

NOTES:

1. MATERIALS - ALL COMPONENTS SHALL BE OF WELDING QUALITY MILD CARBON STEEL CONFORMING TO ASTM A-425.
2. FINISH - ALL METAL SURFACES SHALL BE HOT DIP GALVANIZED AFTER FABRICATION.

ALL DIMENSIONS IN MILLIMETRES EXCEPT WHERE NOTED.



WORKS DEPARTMENT

**STORM SEWER OUTFALL GRATE FOR CSP
(800 mm TO 1400 mm PIPE)**

DWG. DATE: 1980 06

REVISION NO.: 4

REV. DATE: 2013 04

SCALE: N.T.S.

S-100.091