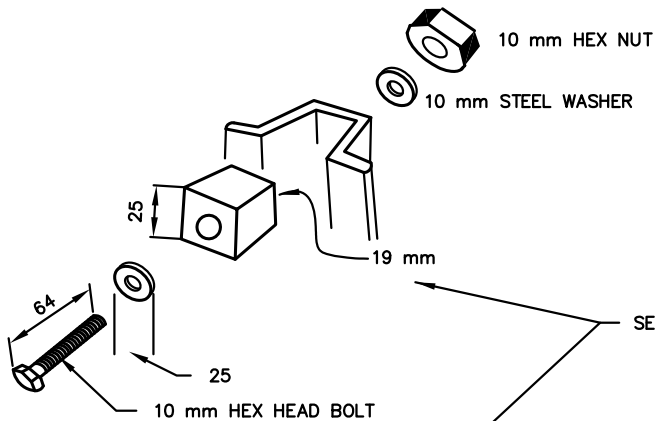
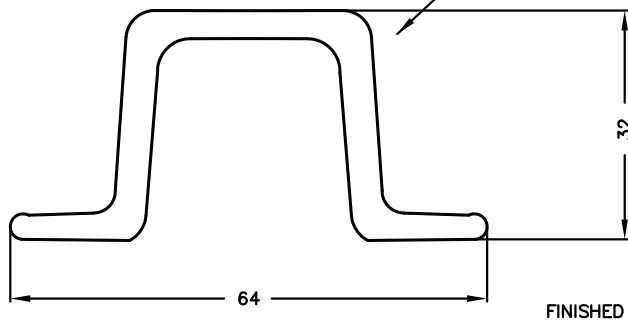


SEE NOTE 2



SEE NOTE 1



SEE NOTE 4

MIN. 1100

MIN. 1050

MIN. 2400

NOTES

- HOT ROLLED U FLANGE STEEL POSTS MANUFACTURED FROM 552 MPa (80,000 PSI) CARBON STEEL. THE TOP 100 cm OF THE POST IS PUNCHED WITH 10 mm OF 50 mm CENTRES. UNIVERSAL FOR EITHER METRIC OR IMPERIAL SIGN MOUNTING. HOT DIPPED GALVANIZED AFTER PUNCHING TO PREVENT RUSTING OF THE METAL SURROUNDING THE 24 HOLES.
- PRESSURIZED WATERMAIN AND/OR SEWAGE MAIN SIGNS SHALL BE SUPPLIED BY THE REGION OF DURHAM.
- LOCATION AND SPACING SHALL BE APPROVED BY THE REGION OF DURHAM.
- LENGTH OF POST USED WILL DEPEND ON FIELD CONDITIONS (MINIMUM LENGTH 2400 mm).

ALL DIMENSIONS IN MILLIMETRES EXCEPT WHERE NOTED.



WORKS DEPARTMENT

**WATER AND SEWER MAINS
LOCATION SIGN**

DWG. DATE:	1991 11
REVISION NO.:	6
REV. DATE:	2013 04
SCALE:	N.T.S.

S-201.020