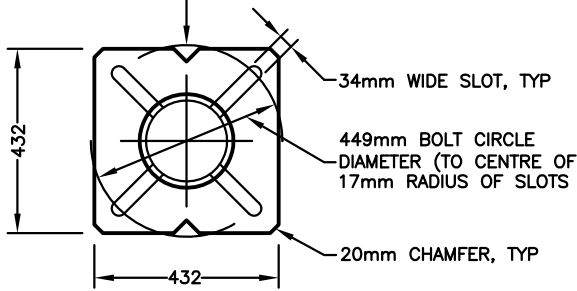
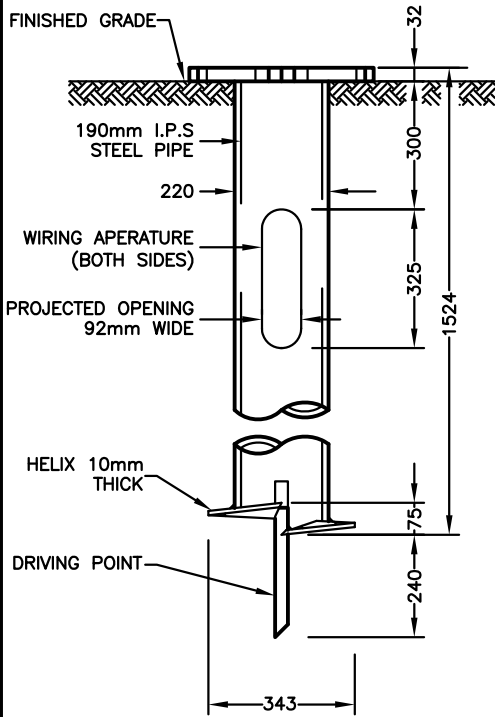


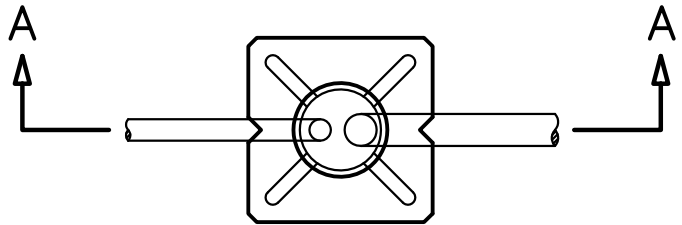
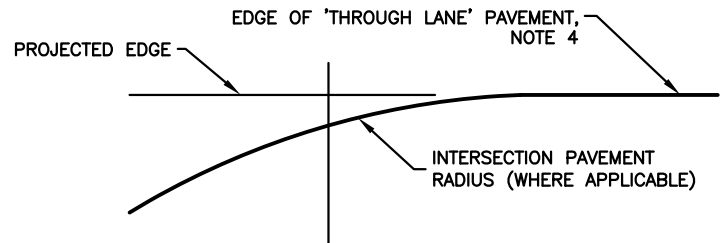
NOTCH, 6x6mm IDENTIFIES WIRING APERTURE SIDE



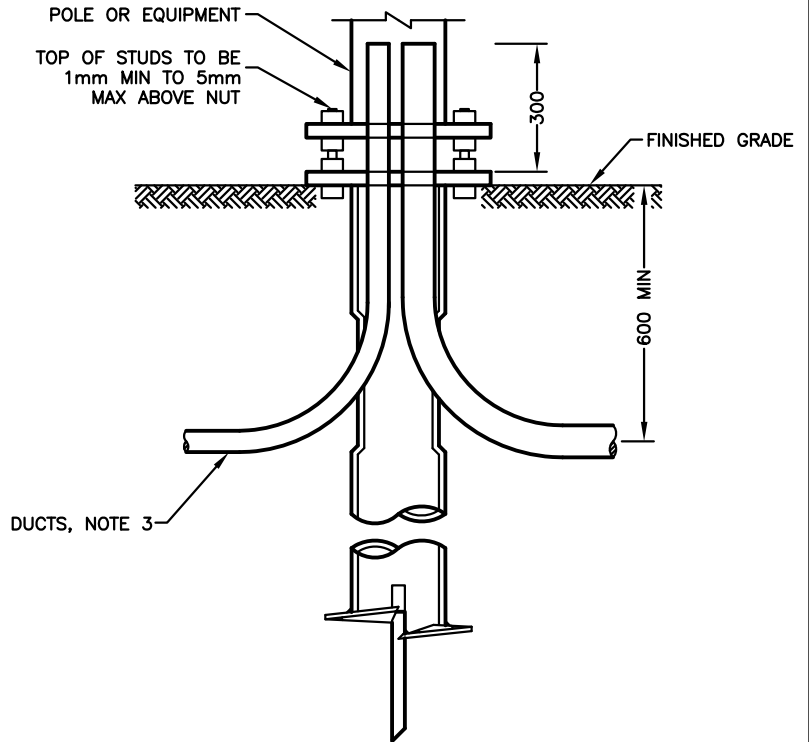
TOP PLATE



SHAFT



PLAN



SECTION A-A

NOTES

1. MOUNTING HARDWARE TO BE m30 X 205mm LONG STUD, ROUND WASHERS WITH FASTENING AND LEVELLING NUTS
2. THE DEVICE DEPICTED ON THIS DRAWING IS PROPRIETARY TO A.B. CHANCE CO. OF CANADA, LTD.
3. STEEL FOOTING WILL ACCOMMODATE THE FOLLOWING DUCTS
 - (a) ONE TO FOUR 50mm DIA DUCTS (ONE TO THREE DUCTS PER SIDE)
 - (b) ONE 75mm DIA DUCT PLUS ONE 50mm DIA DUCT IN ONE SIDE OR IN OPPOSITE SIDES
 - (c) TWO 75mm DIA DUCTS (ONE PER SIDE)
 - (d) ONE 20mm DIA DUCT WITH COMBINATIONS (a) OR (b) ABOVE
4. EDGE OF THE 'THROUGH LANE' PAVEMENT IS THE EDGE, OR PROJECTED EDGE OF THE 'CURB LANE' IN THE AREA. FOOTING TO BE INSTALLED SQUARE TO THIS LINE IN ALL CASES

ALL DIMENSIONS IN MILLIMETRES EXCEPT WHERE NOTED.



WORKS DEPARTMENT

STEEL FOOTING AND INSTALLATION FOR BASE MOUNTED POLES

DWG. DATE: 2014 04
REVISION NO.:
REV. DATE:
SCALE: N.T.S.

S-400.012