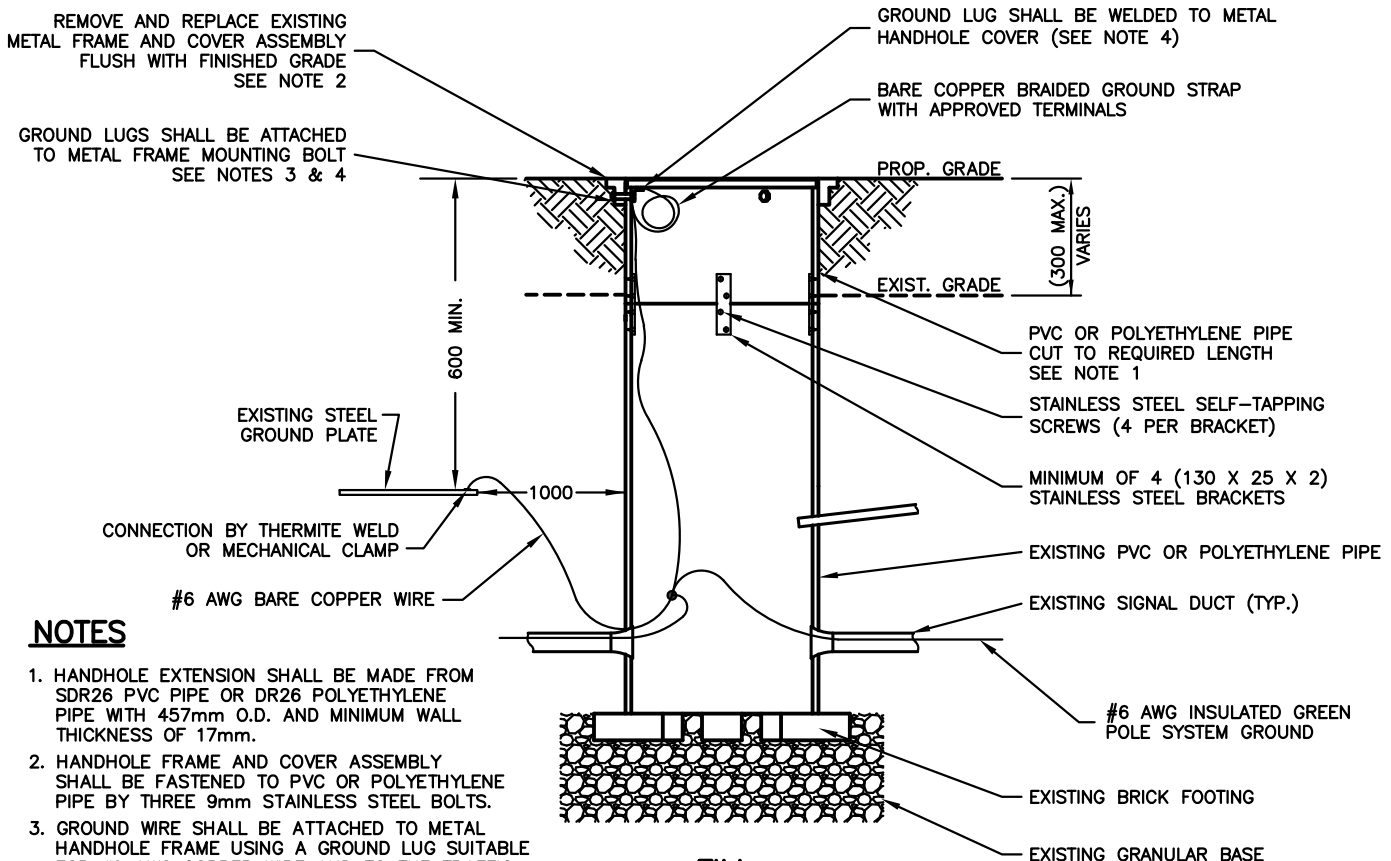


**CUT**



**FILL**

**NOTES**

1. HANDHOLE EXTENSION SHALL BE MADE FROM SDR26 PVC PIPE OR DR26 POLYETHYLENE PIPE WITH 457mm O.D. AND MINIMUM WALL THICKNESS OF 17mm.
2. HANDHOLE FRAME AND COVER ASSEMBLY SHALL BE FASTENED TO PVC OR POLYETHYLENE PIPE BY THREE 9mm STAINLESS STEEL BOLTS.
3. GROUND WIRE SHALL BE ATTACHED TO METAL HANDHOLE FRAME USING A GROUND LUG SUITABLE FOR #6 AWG COPPER WIRE AND TO THE TRAFFIC SIGNAL POLE SYSTEM GROUND AS PER S-411.020.
4. GROUND STRAP SHALL BE ATTACHED TO METAL HANDHOLE FRAME AND COVER USING A GROUND LUG SUITABLE FOR GROUND STRAP TERMINALS.

ALL DIMENSIONS IN MILLIMETERS EXCEPT WHERE NOTED.



WORKS DEPARTMENT

**ELECTRICAL HANDHOLE WITH COVER  
NON CONCRETE 450 mm DIA.  
GRADE ADJUSTMENT**

DWG. DATE: 2002 10
REVISION NO.: 3
REV. DATE: 2017 04
SCALE: N.T.S.

**S-400.031**