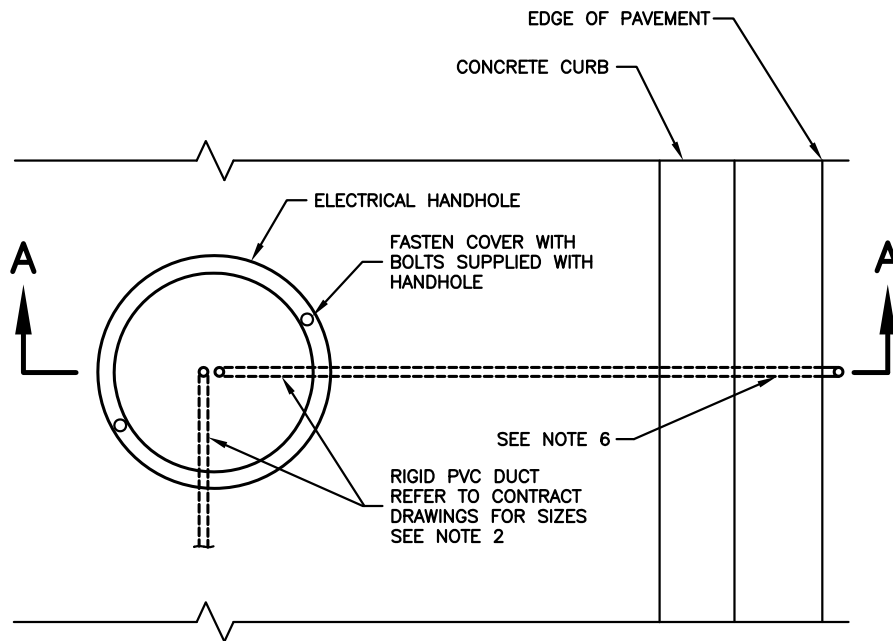
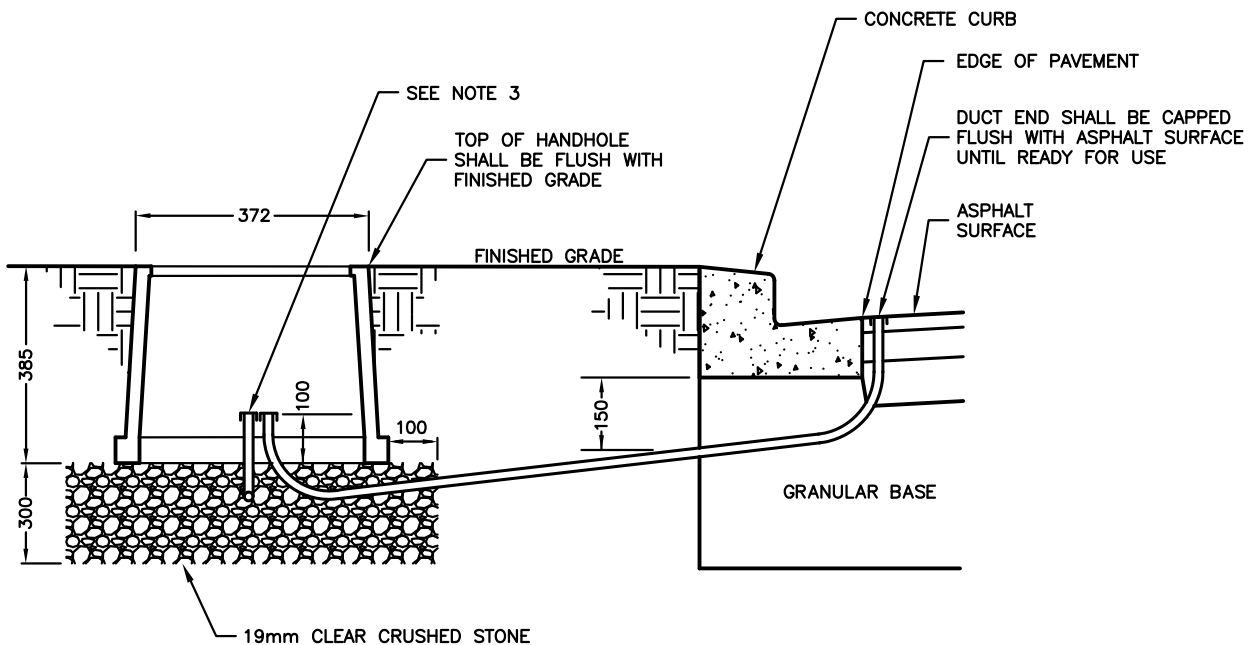


## NOTES

1. ALL DUCTS AND FITTINGS SHALL MEET C.S.A 22.2 No. 211.2-06 SPECIFICATIONS OR APPROVED EQUAL.
2. DUCTS SHALL ENTER FROM THE BOTTOM AND SHALL BE ALIGNED TO THE CENTER OF THE HANDHOLE.
3. ALL DUCTS SHALL BE SEALED AND CAPPED UNTIL WIRING IS INSTALLED.
4. FOR HANDHOLES IN CENTER MEDIAN ISLANDS REFER TO S-300.070.
5. HANDHOLE MAY NOT BE EXACTLY AS SHOWN.
6. MARK DUCT LOCATION AT CURB WITH RED OR WHITE PAINT.



## PLAN



## SECTION A-A

ALL DIMENSIONS IN MILLIMETRES EXCEPT WHERE NOTED.



WORKS DEPARTMENT

# ELECTRICAL HANDHOLE WITH COVER NON CONCRETE 370 mm DIA.

DWG. DATE: 2008 04

REVISION NO.: 4

REV. DATE: 2016 04

SCALE: N.T.S.

S-400.032